



THE WATZON

Newsletter of the Watson Community Association Inc.

Issue 118 – Summer 2023



The Watson Community Association Inc. acknowledges the traditional Aboriginal custodians of Canberra and pays our respect to their Elders past, present and emerging. We also acknowledge that many other Aboriginal and Torres Strait Islander peoples from across Australia have now made Canberra their home. We also acknowledge and celebrate their cultures, diversity, and contribution to the ACT and region.



IN THIS EDITION...

- Thank you ACU
- Welcome to Watson
- Shout out
- *Welcome to Watson* Event
- Have you met Melissa?
- Watson Buzz
- We are recruiting. Come and join our community building projects!
- Tree Removal and Plantation Updates
- Jacpots Ceramics
- Planning Group Report and More
- *Lamond is my best friend*
- Majura Café Poets
- Watson Property Sales
- Support Our Local Businesses
- Community notices
- WCA Membership Form

Please note that the views expressed in this Newsletter are those of the authors and do not necessarily reflect the views of the Watson Community Association.

*Echidna in the Watson Green Space.
Photo credit Kevin Casey.*

The Watson
Community
Association Inc.
wishes to thank the
Australian Catholic
University
(Signadou Campus,
Canberra) for printing the WATZON newsletter as a
community service.



Welcome to Watson!

By Geoff Murray-Prior, Chair of Watson Community Association

In just two years from now the WCA will be celebrating 30 years since its incorporation. The year 2025 might seem some time away, but we all know how time flies. The WCA Committee would like to celebrate this milestone with relevant community events, but we need your input. We propose to discuss this in detail at our next Annual General Meeting, in April 2024. In the meantime, please give this some thought, and send your suggestions to the Committee, via the WCA Committee's email address- watsoncommunityassociation666@gmail.com.

At the same time, please give serious thought to giving some time to your community association. Members are always welcome at our quarterly meetings (next one on Tuesday 13th February 2024) and of course your active involvement is always being sought.

It appears that the new community park on Aspinall Street, opposite Negus Crescent, will not be completed before Christmas, but hopefully will become usable before the end of the January school holidays.

Welcome to Watson ❁



WELCOME TO WATSON

**Please
join us**

The Watson Community Association Inc. invites newcomers to Watson to a casual, free event!

Friendly locals are also invited to welcome our new neighbours

**Sun 14th January at 1.30 to 3:00
pm**

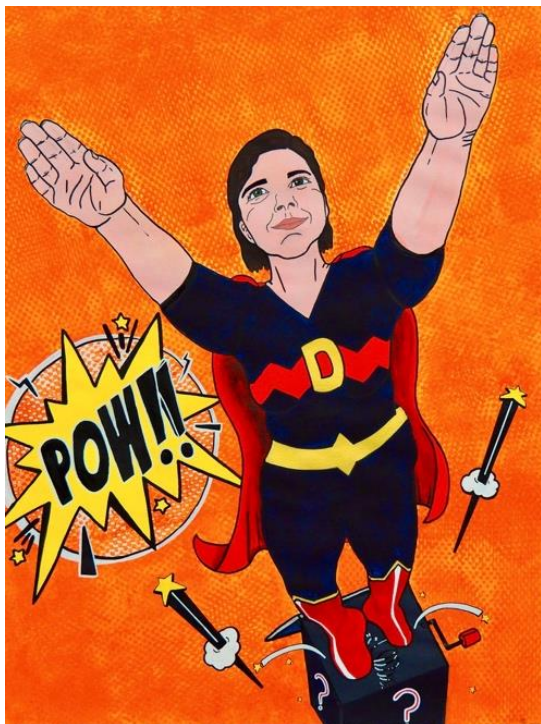
The Knox Cafe, Watson Village

Local groups, organisations, businesses, sporting & hobby clubs have been invited

More information:

watsoncommunityassociation666@gmail.com

Have you met Melissa?



'Don't Put Me in a Box' by Melissa Hammond ©

Artist statement:

Having a disability is like having a superpower – you can see and experience the world in a way others can't even comprehend yet. Unfortunately, people automatically put you in a box that is perceived as a disadvantage. This piece is about challenging the limiting expectations on people with disabilities.

Personally, I have felt my abilities and worth being questioned but I have only been dis-abled by the restrictive nature and limiting beliefs of others. My hope is that the conversation around disabilities can finally change from a negative one of how we're different to "normal" to a positive one embracing our differences.

Melissa chose to call Watson home because of the proximity to the bush, the lovely mature oak trees that line the streets and the very friendly, engaged and close-knit community. "It just felt like home", she says. Unfortunately, her move to Watson has been delayed by extensive structural building works but she hopes to be meeting and greeting the locals by the end of the year.

Melissa is a multidisciplinary artist, often aligning her work with advocacy roles and the exploration of self, following a car accident in 2015 that changed her sense of identity and life forever. She was left with invisible disabilities and quickly found herself battling two wars: the one with her body and the other with those that didn't believe she was disabled because she "looked fine". The International Day of People with Disability is on the 3rd of December and she hopes people will get curious and get involved in events hosted at workplaces and around Canberra to learn more and of the ways we can all build stronger communities that embrace our individual superpowers.

Website: MelissaHammondArtiste.com

Instagram: Melissa.Hammond_Artiste

Watson Buzz

By Aileen Conroy

🐝 Summer has arrived! On hot days honey bees evaporatively cool their hives. They smear water thinly on the comb near their brood and fan it with their wings to keep the temperature between 34-36 degrees.



🐝 Strawberry fruit yield is increased by more frequent honey bee pollination visits. Fruit is more numerous and larger, and its commercial grade increases.

🐝 This is one reason why bees are the most studied animals on earth.

🐝 A native bee spotted nesting underground near my pollinator meadow. Probably one of the 250 species of *Lasioglossum* bees in Australia. Inadvertently I almost covered their burrow entrance with cardboard to kill the surrounding grass!



🐝 Leave a patch of bare soil (not covered by lawn, mulch, weedmat or pavers) to invite ground nesting native bees. 70% of Australia's 17,000 species of native bees build nests underground. Others nest in holes in wood, hollow stems or canes.

🐝 Peter Abbott has written "Native Bees of the ACT and NSW South Coast" which is available from Botanical Bookshop at the Australian National Botanical Gardens*
*

We are recruiting. Come and join our community building projects!

By Carmel Richardson, President of the Living Streets Association



The Living Streets Association (LSA) continues its very worthwhile project of engaging local young people in interesting and deeply appreciated community activity. As Board Director I was recently invited to address a youth meeting where planning was underway for the September school holidays. The Youth Leaders worked enthusiastically and with impressive confidence to plan holiday activities, including a day's activities on the Lyneham Commons. Young students visiting from Taiwan joined the meeting to participate in the fun and engaging planning event. The warm and cooperative atmosphere was the perfect context for authentic cultural exchange and proved again the value of peer learning.

During the recent Board Meeting members identified several priorities for the coming year. Foremost of these is youth member recruitment. Young people are the central focus of the Living Streets Association. All that happens in LSA revolves around a strong community desire to see young people connected to and supported by their own communities. Building 'belonging' to a community happens when people feel safe, appreciated and actively engaged. This is especially important during school holidays when opportunities for connection are more limited.

Becoming a youth leader simply involves getting together with other like minded people to plan and participate in school holiday activities. Rather than a daunting task, youth leadership is an opportunity to meet others and have some fun with lots of personal growth along the way.

Two LSA youth leaders recently hosted the ACT Children's Week Awards where they met other young people from across Canberra similarly

interested in their own communities. Significantly, they were also able to 'rub shoulders' with ACT community leaders, including members of the Legislative Assembly. They did an outstanding job and hope to be welcomed back to perform the same roles again next year.

However, not all youth leaders take on these bigger roles. Most leaders just turn up and offer their time and energies to plan for and help out at local events, like the day spent on the Lyneham Commons.

It's not hard work. But it is lots of fun!

If you think you might be interested or know someone who might be interested and aged between 12 and 21, please consider attending the forthcoming youth meeting which will be held on Saturday the 9th December from 1 - 3pm. It will be a fun afternoon where plans for the summer school holidays will be discussed and made. From my previous experience of these meetings, I know you're likely to share in some games and also enjoy some delicious snacks to boot!

More details about the meeting will soon be available on the LSA Facebook and Instagram and if you have any questions please contact us using contact details listed here.



Website

Website: <https://living-streets.com>

Email:

livingstreetsassociation@gmail.com

Facebook: Living Streets Association

Instagram: livingstreetsassociation 🌸

Tree Removal and Plantation Updates

By Melissa Hammond

Firstly, a big thank you to the community for your engagement and feedback from the questions presented in the last edition of Watzon. A copy of the community feedback below will be shared with the relevant members of the ACT Government and ACT Urban Treescapes in order to assist in future planning of our suburb.



Summary:

1. Should we move powerlines underground to protect the oak trees of Watson?

The community voted YES.

The majority of responses to this question also highlighted the growing concerns of climate change and the preference to keep our large mature trees for shade. A couple of respondents highlighted the logistical issues if powerlines were moved underground and the potential damage it may cause to existing trees and root systems. It will be a delicate balance moving forward on this but the resounding response from the community was that we would like to keep and support larger species of trees in Watson.

2. Would the community prefer to replace any removed oak trees with natives?

The community was TIED between native and exotic species.

Some respondents wanted the oaks to be replaced and if it wasn't possible, other deciduous species to maintain the seasonal aesthetics of

Watson. Others expressed a desire to plant natives that would support the local wildlife and threatened species that call Watson home. Again, climate change is a hot topic with some respondents stressing that new trees would need to be drought resistant to survive the tougher conditions.

In conversations with the ACT Government, I have been provided a link to a helpful resource that will aid us in narrowing our options. Please keep in mind that the powerlines are currently in place and therefore, we have a 5-metre height restriction for the oak trees removed on Irvine Street. You will find a link to 'Native 1-10m' and 'Exotic 1-10m' at the bottom of this website: <https://www.cityservices.act.gov.au/trees-and-nature/trees/trees-and-development>

3. What would the community like to see with the wood that has been salvaged?

The community was STUMPED.

I hope the pun was appreciated! It is tricky as the current conditions are strict but some respondents asked if we could explore school or art programs in our community. I will reach out to the relevant ministers to explore those avenues and get back to you with an update in the next edition of Watson.

Next steps:

Some wonderful news to come from this project is that another 7 mature oak trees were identified as looking unhealthy and at risk of dying will now be receiving aid in the near future. More details and possibly some exciting new community projects to be announced in the next edition of Watson.

For now, if you would like to have your say in shaping the future of Watson's treescape, please check out the website above and send your tree preferences to treesofwatson@gmail.com. Thank you everyone for your help and happy holidays ❀

Jacpots Ceramics

By Jacqueline Lewis

Tucked away in one of the cul de sacs off Irvine Street is the home of Jacqueline Lewis and the Jacpots ceramics gallery. Jacqueline's family moved to Watson when she was only 4 months old, so she is very much a local. She went to Rosary Primary School and then on to Braddon Catholic Girls High as it was known then.



Stoneware bowl and beaker.

Photo credit: Jacqueline Lewis, Jacpots Ceramics

She fell in love with Ceramics in the early 1990s. Jacqueline studied at Goulburn TAFE for 5 years then on to the ANU School of Art for a further 4 years.

She has exhibited throughout Australia, and currently has a gallery in her Foster Place home. The gallery started with a few shelves in the lounge room and now occupies the front half of her home.

Jacqueline makes domestic ware, water bowls, garden sculptures, vases, Ikebana pots and much more.

The Gallery in Foster Place Watson opens Sundays 11am to 4pm or by appointment. You can book an appointment by calling [0493 872 770](tel:0493872770) or follow Jacqueline on Instagram [@jacquelinelewis8665](https://www.instagram.com/jacquelinelewis8665) *
*

Planning Group Report and More

By Simon Clarke, WCA Planning Group Convenor and NCCC representative

A “quiet” period in planning in our suburb at this stage. Are developers waiting for the new planning legislation to be implemented before action happens? EP&SDD have been doing lots of online training as the system is very complex and will take time to understand. Consensus among Community Councils is that it is skewed towards development. I think we just need to keep aware and ask questions.

The recent ACAT decision prioritising parkland over parking does give you a bit of hope.

--

A Plea- Caring for our Children!

I have had the joy of being a “pre-school granddad” this year. One thing which has become obvious is the number of people who wilfully ignore the marked school crossings when they cross the road, (often a handful of metres from the crossing), with or without their child(ren), when they drop off or pick up.

What message does this give to our kids? I hope it does not take a tragedy to wake us up! Our children will mimic what they see us do!

The power to be good role models lies with us. Let’s use that power ❁

CHRISTMAS EVENTS



Sunday 3 December

9.30am: Advent Family Service

6pm: Ecumenical Taizé Prayers

A candlelit service with music & readings



Thursday 7 – Monday 11 December

North Canberra Nativity Festival

Daily 10am-5pm: Exhibition 200+ nativity scenes

Thurs 7.30pm: ACT Youth Orchestra Concert

Sat 5.30pm: Looking Glass Percussion Concert

Sun 6.30pm: BBQ and Carols free & open to all



Monday 18 December

7.30pm: Blue Christmas Service

A quiet, alternative service for anyone who is experiencing grief, loss and pain this season



Sunday 24 – Monday 25 December

9.30am: Xmas Eve Brunch & Carols

5pm: Kids Nativity Service

11pm: Midnight Mass

9am: Christmas Day Services

Image credit- Holy Cross Anglican Church, Hackett

holycrosshackett.org.au
stmargs.unitingchurch.org.au



Lamond is my best friend

By D. Hardt, Burnside St

He poo's on Piddington
So I look for the bags.
Then we turn into Knox
And his tail wags.

He trots ahead,
Looks back and smiles.
I've been here before,
We'll be walking for miles.

To the park!
To the park!
He barks.

Yeah, to the pond!
To the pond!
I respond,
To Lamond.

So we proceed.

He does 40 odd wees
In the wind-tunnel of trees,
So it's on with my puffer jacket.

With parrots Superb
It's an excellent suburb
And it's not quite as pricey as Hackett.



MOVING

Belinda Ketley

I do not know why
it is a thing
but
it is a thing
to travel eternally
and never quite make it

even
when completely still
body quiet
that monkey-grip
in the mind
relaxed
for now

gravity still holds
the earth whirls
forwards and away
carrying us
helplessly
towards where we were

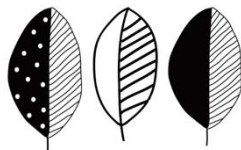
without the tiniest skerrick
of motion
we evolve
furiously
complacently
unaware
yet
trembling a little
in the dark
perhaps in our sleep.

'Remove'

David Turbayne

Remove those blessed little stickers
Please - please take them off our
fruit
Never even put them on!
They drive me nuts - they do!
Turning up in my compost
- uncompostable!

Who came up with this brilliant idea
To blight our lives?!
To add to my angst
No, it's not Armageddon
Or even Trump re-elected!
But do we need these bright
coloured creatures?
To add to our recycling woes
'Banish them', I say!
Join the fight to save the planet
Consign those little fruit stickers to
the dustbin of history
- or at least make them recyclable!



Majura Café Poets (cont.)

Carpe Diem

'In memory of my mother and her friends'
Jenny Burgess

The Card Game

bone china teacups
with roses smiling friendship
warm the women's hearts

lace and linen ironed
fresh flowers in crystal
wood gleams with polish

purses from Florence
hold pennies and halfpennies
another Solo game

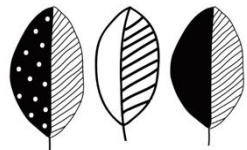
gem scones tempt tastebuds
widen waists and fingers
rings grow tight

hairdresser-fresh locks
frame newly made-up faces
and spotless spectacles

wrinkles surround smiles
furrows freeze character
deepen dignity

spades, hearts, diamonds, clubs -
they count their trumps
in luck and life

death defied here
at ninety 'carpe diem'
please pass the milk and sugar



Watson Property Sales

Brought to you by home by holly

2 Hearn Street	\$2,270,000	10 Bicheno Mews	\$735,000
3 Phillip Avenue	\$1,620,000	426 Antill Street	\$725,000
8 Dodds Place	\$1,600,000	18/19 Aspinall Street	\$721,000
20 Shewcroft Street	\$1,276,000	17/14 Federal Highway	\$685,000
22 Phippard Court	\$1,255,000	70 Ian Nicol Street	\$675,000
7 Phillip Avenue	\$1,155,000	42/25 Aspinall Street	\$560,000
10 Fleming Street	\$1,135,000	26/25 Aspinall Street	\$500,000
5 Dobbie Place	\$1,110,000	10/20 Federal Highway	\$455,000
4 Williams Street	\$1,045,000	88/20 Federal Highway	\$445,000
1 Hanson Place	\$965,000	30/20 Federal Highway	\$430,000
86/215 Aspinall Street	\$870,000	18/21 Aspinall Street	\$405,000
41/215 Aspinall Street	\$845,000	39/25 Aspinall Street	\$395,000
13/21 Aspinall Street	\$817,000		
33/215 Aspinall Street	\$815,000		
29/215 Aspinall Street	\$752,670		

Support Our Local Businesses



Come in and experience
the service for yourself!

**EXPRESS
WATSON**
Phone: 02 6255 6800

*EFTPOS available – no minimum
FREE local home delivery services*



We are a local hub for families and friends to relax and enjoy excellent local & seasonal food and beverage.

We care about the earth and environment, and we do everything in our power to be sustainable and environmentally friendly in all our business practices.

Brekky and lunch - 7 days a week

Monday-Friday 7:00 am to 4:00 pm

Saturday-Sunday 7:30 am to 4:00 pm

**At the Knox we are for
the locals, by the locals.**

Dinner

Tuesday-Saturday from 4:00 pm

home byholly

Team McReynolds

Michael, Jenny and Mark

For all your real estate needs,
call us today!

Jenny 0409 300 065 | Michael 0419 688 034

Mark 0401 829 087 | jenny@homebyholly.com.au



ANDREW MCREYNOLDS PLUMBING

FOR ALL YOUR
PLUMBING SOLUTIONS

MOB: 0402 921 111

E: andrew.mcreynolds1@gmail.com

LICENSE NO. 20121001

ABN: 95548301062



Convenient one stop shopping in Watson for all your pharmacy needs

Watson Pharmacy

For friendly and efficient Customer Service

Flu and Covid vaccines

- ❖ Covid-19 vaccines- Pfizer, Moderna and AstraZeneca
For adults and children over 12 years old
- ❖ Flu vaccines
For adults and children over 5 years old

Hard to park? You can hand in your scripts by ringing us on (02) 6241 1506

Mon to Fri 9:00am–6:00pm

Sat: 9:00am–01:00pm

- ❖ QCPP accredited
- ❖ Leave/medical certificates
- ❖ Seniors' discounts
- ❖ We can price match
- ❖ Free script pick-up and delivery
- ❖ Stop smoking classes
- ❖ Blood pressure checks

Licensed Post Office

- ❖ Postal Services
- ❖ Gifts
- ❖ Cards for all occasions
- ❖ Passport photos

Mon to Fri 9:00am–5:30pm

Blocked drains. Hot water. Leaking taps.



Chris Williams

M | 0420 607 765

E | chrisjw100@gmail.com

PO Box 7179 Watson ACT 2602

ABN 27 638 504 284

NSW Licence 282355c ACT Licence 2019222

WellSorted
Professional Organiser



Contact Virginia Wells on
0422 490 131

virginia@getwellsorted.com.au
www.getwellsorted.com.au

Disorganisation, overwhelm and clutter in your home, mind & life? Let me help you bring calm, order & space into your day with hands-on or virtual assistance.



INNER NORTH COMMUNITY PANTRIES NETWORK

TURNING THIS:

Neighbours, schools, community groups, workplaces, collect your cans, bottles and donate your 10c redeemables to the Inner North Pantries Network



INTO THIS:

Funds are used for \$50 weekly Box Divvy fruit & veg and help fund supplies for Ainslie & Braddon
Account number: 0432 947 136

Help with O'Connor supplies
Account number: 0458 793 285

Drop to our collection points:
O'Connell or Stephen Street, or drop to an Express or ReturnIT point



Community Notices



Inner North Playschool is a licensed Playschool which provides exceptional early childhood education for 3-4 year olds in North Canberra.

Our aim is to enrich the child's development in a safe and nurturing environment while having fun and making friends. To enquire about vacancies contact us today.

innorthplayschool@gmail.com
0408 447 788



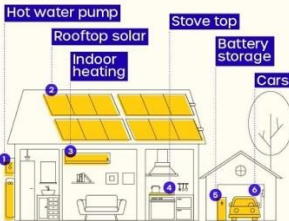
www.innernorthplayschool.org

Adjacent to Ainslie Church of Christ, Corner Limestone Avenue & Grimes Street, Ainslie



SUBURB ZERO

We're looking for 500-1,000 Canberra homes to be a part of a world-first program to electrify their suburb



Do you want to reduce your cost of living while safeguarding our environmental future?

Take our survey!

[surveymonkey.com/r/electrifyACT](https://www.surveymonkey.com/r/electrifyACT)



<https://www.suburbzeroact.au/>



WATSON
COMMUNITY ASSOCIATION INC.

APPLICATION FOR MEMBERSHIP

Incorporated under the Associations Incorporation Act 1991

I / We,
(full name of applicant/s)

of (address)
.....

hereby apply to become a member/s of the above-named incorporated Association.
I / We agree to be bound by the rules of the incorporated Association for the time being in force.

Email

..... Date
(Signature of applicant 1)

..... Date
(Signature of applicant 2)

Note:

Information provided by the applicant is used to confirm Watson residency and to enable the Watson Community Association (WCA) to communicate with members regarding upcoming meetings and matters of interest. Information provided is not shared beyond the purpose of WCA information distribution.

Please return completed form to:



watsoncommunityassociation666@gmail.com

