



THE WATZON

Newsletter of the Watson Community Association Inc.

Issue 113 – Spring 2022



The Watson Community Association Inc. acknowledges and pays respect to the past, present and future Traditional Custodians and Elders of this nation and the continuation of cultural and spiritual practices of Aboriginal and Torres Strait Islander peoples.



Gang Gang Cockatoos. Image courtesy of John Harding.

IN THIS EDITION...

- Thank you ACU
- Greetings, Watson residents!
- Editor's note
- YWAM Spring Fair
- Welcome to Watson event
- When life gives you lemons- eat cake
- Watson Profile- Bokbo
- ACT Children and Young People Commissioner's Special award – School Holiday Program
- Majura Café poets
- Friends of Watson Green Space
- Have you met John?
- Planning group report- A win for Watson and the Inner North
- Watson buzz
- More from Majura Café poets
- Watson property sales
- Support our local businesses
- Community Notices
- Useful Contacts
- WCA Membership Form



The Watson Community Association Inc. wishes to thank the Australian Catholic University (Signadou Campus, Canberra) for printing the WATZON newsletter as a community service.

Greetings, Watson residents!

By Geoff Murray-Prior, Chair of Watson Community Association (WCA)

At the WCA Committee meeting last month we welcomed the Friends of Watson Green Space as a Working Group under the overarching banner of the WCA. This group will continue their good work and will also work in collaboration with the Woodlands Working Group. This will provide additional synergy to both Groups and will enable a united front in dealing with the relevant Government agencies. Clearly the Watson environment is the resultant winner.

More good news is contained in Simon's Planning Group report elsewhere in this edition. The proposals for the development of the old Watson High School site reflect some years of steady, behind the scenes activities by the WCA and the Planning Group. In many ways this outcome is the result of a decision some three years ago to be proactive and develop a Plan for the Sustainable Development of Watson. This Plan laid out the WCA's vision for the future development of our suburb; considered a far better approach than waiting for something to happen then objecting. As an aside, it was decided at our recent meeting to update the statistics in that Plan now that recent census data is available.

I must also mention the valuable contribution made by the youth of Watson. Last summer the Living Streets youth ran a successful summer school holiday program; many of you would have seen them at Watson shops and elsewhere. As a result, the Children and Young Peoples' Commissioner, Jodie Griffiths-Cook, has awarded them her special ACT Children's Week Award, citing how their activities have helped to build community. Congratulations to Living Streets for this recognition. ✨

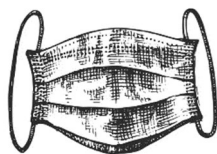
Editor's note

By Nora

Here comes the second last Watson newsletter for 2022. This edition is jam packed with great content from our enthusiastic contributors. There is a special feature from *Friends of Watson Green Space*. A big thanks to Mr John Harding, for his generosity with letting us use one of his works for our cover.

This time, I received a few submissions from The Majura Café Poets, which I just managed to find space to feature their good works in this edition. I found the haiku (featured below) about masks by the Poet s' convenor, Fiona, particularly relevant. I work in an area that still requires a mask and PPE, where it's not required most other times. A big nod to all those who also have to juggle between different sets of mask rules. Enjoy ✨

Please be in touch if you have any suggestions watsoneditor@gmail.com



A haiku

*mask off or mask on
between outdoors or indoors
all confidence gone*

Fiona Mcilroy



Spring Fair

YOUTH WITH A MISSION

(Aspinall St back entrance will be open)

Sunday 16th October 2022

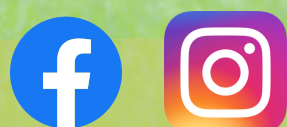
2pm to 5pm

Stalls - art, craft, food (buy & sell)

- local community groups
- free sausage sizzle
- music & line dance
- activities for kids & big kids
- and much more!

For more info/to enquire about having a stall, contact
communityserve@ywamcanberra.org
or Leonie 0419017552

Please follow ACT
government CoVid
safety guidelines.



www.ywamcanberra.org

76 Federal Hwy, Watson



WELCOME TO WATSON

Please Join us

The Watson Community Association Inc. invites newcomers to Watson to a casual, free event!

Friendly locals are also invited to welcome our new neighbours

Sun 18 Sept at 2 to 3:30 pm
BBQ area at "The Ridge"
(Park cars near 67 Negus Cres)

Local groups, organisations, businesses, sporting & hobby clubs have been invited

More information:

watsoncommunityassociation666@gmail.com

When life gives you lemons- eat cake

By Silvie Eckhardt

If you buy up all the mandarins at the farmers market or can't imagine a G&T without a fresh lemon wedge, you should consider growing your own citrus. Varieties that are hardy enough to survive Canberra's frosts include meyer lemons, grapefruit 'weeny', dwarf mandarin 'emperor', and dwarf limes 'Tahiti' and 'Sub Lime'. Citrus trees can fruit from autumn to spring when we really need the vitamin C and cheering bright yellows and oranges on grey days. The classic spot to plant them is against a north facing brick wall, but



dwarf varieties work well in pots on balconies or in courtyards which provide protection.

If your citrus has yellow leaves following winter this could be frost damage or possibly a nutrient deficiency. Wait until frosts have passed to give a handful of organic fertiliser or chicken manure per square meter and cover with mulch (but not to the trunk) and trouble shoot by comparing the leaves with google.

My favourite way to use lemons is to eat them in this Nigel Slater lemon and thyme cake (also google-able). Instead of using thyme flowers as a garnish, I use rosemary whose deep blue (or sometimes purple or pink) flowers really pop against the yellow cake *

Watson profile- Bokbo

Bokbo is a multigenerational business comprising Sonia van den Berg and her extended family. Sonia moved to North Watson from Lyneham to be closer to her son Graham, his wife and their three children who live in old Watson. Bokbo.com.au is an online store specialising in quality baby and kid's clothes and thoughtful gifts. Sonia's grandchildren (including two who live in Perth) are actively involved in the business. Eight-year-old Samara is an expert in folding and displaying clothes in Bokbo's showroom, and wrapping orders for pickup or delivery. She and her five-year-old sister, Jasmine, love curating gift boxes – enthusiastically selecting items that 'go together'. Sonia enjoys sharing her knowledge about the specific benefits of each product, whether it's handcrafted, locally produced, eco-sensitive or socially responsible.



Bokbo.com.au is your local family run online store specialising in quality baby and kid's clothes and sustainable gifts*

ACT Children and Young People Commissioner's Special Award – School Holiday Program

By Belle Yu and Daniel Tempra, Living Street Association

Living Streets' Summer Holiday Program in 2021 was awarded by the Children and Young People Commissioner Jodie Griffiths-Cook with her special ACT Children's Week Award. She saw the need to recognise our young people because the programs they lead have helped build community during the lockdowns. Because of various circumstances there was no physical award ceremony, but an online one instead which you can watch a snapshot of here:

<https://youtu.be/Hah0LGw5MMO>



The Commissioner has contacted us and wants to personally present last year's award individually to our young people at a special ceremony hosted at the Human Rights Commission at the end of August. We greatly look forward to it and will be sure to post the photos on our socials!

Our program is organised by youth volunteers giving them ownership of the program and an important sense of responsibility for the outcomes of the program. Through the responsibility of organising, youth volunteers will encounter many learning opportunities such as meeting, listening and discussion skills via planned meetings. During the program, teamwork skills can be exercised. Young people engage with children, implement their program plans, and lead the activities. They can apply their communication, problem solving as well as coordinating skills throughout the program. After the program, they hold a review meeting to celebrate, reflect upon what they have gained, and what they can do differently in the future.

Youth organisers also play the role of mentor, teacher and facilitator to the younger participants which provides valuable learning experiences by engaging with others in a positive, productive, and responsible way. Young participants of the Living Streets Summer Holiday Program are given the opportunity to build meaningful relationships with youth mentors from within their local community. The youth mentors present the participants with a host of fun and educational activities in a familiar and comfortable environment. Through these activities young participants will experience hands-on, real-world skill building delivered by youth mentors and neighbourhood parents giving participants a diverse range of perspectives, ideas, and methods of teaching.

Please get in touch if you would like to join Living Streets to volunteer in our community *

Email: livingstreetsassociation@gmail.com

Facebook: Living Streets Association

Instagram: [livingstreetsassociation](https://www.instagram.com/livingstreetsassociation)

Majura Café Poets

balmy Darwin days
Arafura sun setting
spring beckons 'down south'.

David Turbayne

Woolies Serenade

Mozart concerto
outside Woolworths meant to
deter the homeless

gentle flute strokes
the airwaves where he lies
sweet dreams no stress
Fiona Mcilroy

Friends of Watson Green Space

By Veronica Walker



Friends of Watson Green Space is a volunteer group aimed at supporting the biodiversity of the Watson Green Space while building community. Watson Green Space runs between Aspinall and Antill Streets under a series of powerlines and is a popular off-leash dog area. It is bordered by the Watson Woodlands / Justice Robert Hope Park (home to critically endangered Box Gum Grassy Woodland) and the Mount Majura Nature Reserve. The group is seeking approval for a small project, which would see local wildflowers and grasses planted under the dripline of one of the remnant Yellow Box Gum trees in the area. Volunteers will also help to maintain weeds and improve the amenity of the area.

The group can be found on Facebook at www.facebook.com/groups/friendsofwatsongreenspace/, or contacted via email at friendsofwatsongreenspace@outlook.com *

Have you met John?



John Harding is a regular contributor to the Friends of Watson Green Space Facebook page. John has been dog-walking in the Watson Green Space regularly for 30 years, and finds it a marvelous off-lead area. He can often be found of a morning in the Watson Green Space walking his dogs with his telephoto camera, taking photos of local birdlife which he shares with the Friends of Watson Green Space Facebook Group. In 1976 he organised and won the first ever Canberra marathon in 2hrs 36mins. Over the last 20 years, John has organised the annual Bush Capital Bush Marathon Festival on the Ainslie-Majura fire trails. He has also been involved in orienteering for 40 years and has made bush and urban orienteering maps across Canberra, including on Mt Majura and in Watson. He is currently coordinating the Orienteering ACT weekly street orienteering program *

Planning group report- A win for Watson and the Inner North!

By Simon Clarke, Chair of WCA Planning Group

Well done Watson residents! We've got our Community Playspace! Watson Community Association, residents and many other groups have been campaigning for this for 4 years. In the recent ACT Budget, Chief Minister Andrew Barr confirmed 3 year funding to make it a reality.

"A destination style playground and recreation park will be built in Watson, costing \$2.6 million. The 22,000 square metre park, to be built near the shops and Majura Primary School, will feature climbing structures, nature and water play, as well as barbecues and toilets – all things the community said they wanted. Asphalt tennis courts at the site will be modernized. Until now, the inner north has lacked a large community destination play space, and Mr Steel expected the new park would attract people from all over Canberra."

This is a big win and includes toilets, which we were told over and over again would never happen!! A huge shoutout to everyone, from a range of different groups, who kept plugging away to make this happen. A win for Community Power!

Planning report

A couple of months with very little obvious action on the major projects in the Watson pipeline.

- Section 76 Watson – they are in the “estate planning” phase. The only dates on the Govt website are 2022-23 so we just wait to see.
- Inner North Play Space. It's a win!
- AIE re-development – no current news.
- Service station site redevelopment – Nothing new on Purdon Planning Site.
- Block 74 – no current news.

Active Travel Consultation

The WCA has made a submission to this consultation. I will outline our submission in the next edition ✨

Watson buzz

By Aileen Conroy

🐝 Honeybees are very busy in spring. Bees are hygienic and do not defecate in their hive. On the first warm day they emerge from diapause (hibernation) on a cleansing flight and leave little yellow spots over the first few metres - therefore do not park your car in front of a beehive entrance in early spring!!

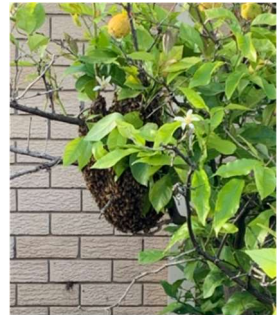


🐝 Weeds can be an excellent source of pollen - this forager has collected it on the tiny hairs of her body and legs. She'll carefully comb it all into the pollen pockets on her back legs before carrying it to the hive.

🐝 Swarming season also begins in spring and continues through summer. When the hive becomes crowded the old Queen leaves with about half the hive and moves to the most suitable home which the 200-300 scout bees have located. A weatherproof space of about 40 litres with a small entrance is preferred.

🐝 Beekeepers try to manage their hives proactively to prevent swarming in order to preserve tree hollows for native birds and animals.

🐝 Swarming bees are usually placid because they gorge themselves on honey before departing.



Honeybee swarm in Hackett



Native Cuckoo Bee.

Image courtesy of Peter Abbott

You can help:

🐝 If you find a swarm, please consult actbeekeepers.asn.au for a suitable swarm catcher



More from Majura Café Poets

clasp

Clasped by daffodils
Bright yellow gold
Raising a fist to the chill
Of Winter, welcoming Spring.

Tiny leaf buds push up
On branches bare and pale
Heralding an end to cold
Sunshine is on its way

Rosellas forage in grass
Hoping to reach seeds
Their feathers cherry red
And rainbow coloured.

A cat stretches its coat
Black against green grass
Golden eyes reflecting
The lush daffodils

Soon wintry cold winds
Carry icy blasts from snow
Coating the distant hills
Then becoming warmer.

The springtime sun's heat
Gorgeous flowers beckon
A joyful spring to come
Celebration of winter's end

Sandie McGahy

Connection

At the National Museum

'Immersed in another world
Time stops still
Between now
And 65,000 years ago

Enveloped by songs and sounds
Ancient and modern
The natural world in all its glory
Takes many different forms
In paint, on the body, on the
ground,
sung and danced through time

And the painters
Bringing so many stories and
country
into our consciousness

Tjukurpa infused in all beings
All knowledge and history blends
landscapes and waters,
skies and stars.'

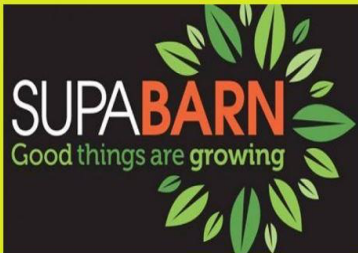
Cynthia Shannon

Watson Property Sales

Publicly available, kindly supplied by Mark McReynolds, from home by holly

1/24 Wade Street	\$774,000	33/23 Aspinall Street	\$600,000
10/19 Aspinall Street	\$770,000	37 Whitmore Crescent	\$440,000
129/20 Federal Highway	\$550,000	45 Williams Street	\$1,100,000
135/20 Federal Highway	\$625,000	5 Holroyd Street	\$1,150,000
14 Whitmore Crescent	\$725,000	54 Mary Kitson Street	\$1,335,000
2/23 Aspinall Street	\$600,000	57 Whitmore Crescent	\$565,000
2/24 Wade Street	\$516,000	58/20 Federal Highway	\$550,000
20 Molesworth Street	\$1,200,000	63/23 Aspinall Street	\$570,000
20 Windeyer Street	\$968,000	66/20 Federal Highway	\$569,000
21 Kilduff Street	\$1,282,000	70 Aspinall Street	\$1,050,000
23 Kilduff Street	\$1,345,000	70 Whitmore Crescent	\$640,000
28/211 Aspinall Street	\$975,000	8 A'Beckett Street	\$1,620,000
3/20 Federal Highway	\$535,000	8/45 Negus Crescent	\$860,000
3/271 Antill Street	\$325,000	80/215 Aspinall Street	\$955,000
31 Woolcock Street	\$1,100,000	9 Hanson Place	\$1,065,000

Support Our Local Businesses



Come in and experience
the service for yourself!

**EXPRESS
WATSON**

Phone: 02 6255 6800

**EFTPOS available – no minimum
FREE local home delivery services**



At the Know we are for the locals, by the locals.

We are a local hub for families and friends to relax and enjoy excellent local and seasonal food and beverage.

We are about the earth and environment. And we do everything in our power to be sustainable and environmentally friendly in all our business practices.

Monday 7am - 4pm
Tuesday 7am - 8.30pm (4pm onwards is takeaway pizza only)
Wednesday 7am - 4pm
Thursday 7am - 4pm
Friday 7am - 8.30pm (4pm onwards is takeaway pizza only)
Saturday 7.30am - 8.30pm (4pm onwards is takeaway pizza only)
Sunday 7.30am - 3pm
Public holidays 7.30am - 3pm

Canberra Music Education School

Diane London

Diane is a piano teacher with over 15 years of teaching experience. Diane's training included B. Music at the Australian National University School of Music with some of Australia's most prominent pianists. Diane teaches all styles, levels and ages, including adult students who have never learnt piano before, but have always wanted to!

**Enquiries:
Contact Diane
on 0414 788 380**

home.by holly

**Team McReynolds
Michael, Jenny and Mark**
For all your real estate needs,
call us today!

Jenny 0409 300 065 | Michael 0419 688 034
Mark 0401 829 087 | jenny@homebyholly.com.au



WellSorted
Professional Organiser 

Disorganisation, overwhelm and clutter in your home, mind & life? Let me help you bring calm, order & space into your day with hands-on or virtual assistance.

Contact Virginia Wells on
0422 490 131

virginia@getwellsorted.com.au
www.getwellsorted.com.au

Convenient one stop shopping in Watson for all your pharmacy needs

Watson Pharmacy

For friendly and efficient Customer Service

Flu and Covid vaccines

- ❖ Covid-19 vaccines- Pfizer, Moderna and AstraZeneca
For adults and children over 12 years old
- ❖ Flu vaccines
For adults and children over 5 years old

Hard to park? You can hand in your scripts by ringing us on [\(02\) 6241 1506](tel:0262411506)

Mon to Fri 9:00am–6:00pm
Sat: 9:00am-01:00pm

- ❖ QCPP accredited
- ❖ Leave/medical certificates
- ❖ Seniors' discounts
- ❖ We can price match
- ❖ Free script pick-up and delivery
- ❖ Stop smoking classes
- ❖ Blood pressure checks

Licensed Post Office

- ❖ Postal Services
- ❖ Gifts
- ❖ Cards for all occasions
- ❖ Passport photos

Mon to Fri 9:00am–5:30pm



We fix leaks and everything else plumbing

Chris Williams
M | 0420 607 765
E | chrisjw100@gmail.com
PO Box 7179
Watson ACT 2602

ABN 27 638 504 284
NSW Licence 282355c
ACT Licence 2019222

ANDREW MCREYNOLDS PLUMBING

FOR ALL YOUR PLUMBING SOLUTIONS

MOB: 0402 921 111

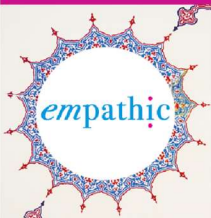
E: andrew.mcreynolds1@gmail.com

LICENSE NO. 20121001

ABN: 95548301062



Tracey Mansted Psychotherapist



PSYCHOTHERAPY & COUNSELLING
FOR ADOLESCENT & ADULT WOMEN
IN WATSON

empathic.com.au

Community Notices



THE TUCKERBOX

Hackett

HOLY CROSS ANGLICAN PARISH

Website: www.holycrosshackett.org.au

Email: tuckerbox@holycrosshackett.org.au

Holy Cross Tuckerbox is a volunteer-run food outlet designed to assist people with budget constraints.

Phone: 0490 336409

Rev. Tim Watson

Canberra



Australian
Breastfeeding
Association

1800 686 268

Website: breastfeeding.asn.au

Facebook: [@ABAACTSNWSW](https://www.facebook.com/ABAACTSNWSW)

We support, educate and advocate for a breastfeeding-inclusive society.

We have:

- events for members and guests
- a 24-hour Breastfeeding Helpline
- breastfeeding education classes/webinars
- breast pump hire
- the mum2mum app

and so much more.

Email: canberra@breastfeeding.asn.au



Website: <http://megstoybox.org/>

Meg's Toy Box is a community organisation which hires toys, puzzles and games for children aged from three months to five years.

Useful phone numbers

Emergency	000
Canberra Hospital	5124 0000
Calvary Hospital	6201 6111
Inner North (Dickson) Walk In Centre	5124 8080
Healthdirect Australia	1800 022 222
Lifeline	13 11 44
Kids Helpline	1800 55 1800
Qlife	1800 184 527
Access Canberra	13 22 81
The Pantry	0419 017 552
<i>Food assistance at YWAM, North Watson</i>	
ActewAGL	
Electricity	13 10 93
Gas	13 19 09
Icon Water	6248 3111
Head to Health Pop Up Services	1800 595 212
<i>Mental health and wellbeing support Mon-Fri 8.30am-5pm (except public holidays)</i>	
Access Mental Health	1800 629 354/ 6205 1065



WATSON
COMMUNITY ASSOCIATION INC.

APPLICATION FOR MEMBERSHIP

Incorporated under the Associations Incorporation Act 1991

I / We,
(full name of applicant/s)

of (address)
.....

hereby apply to become a member/s of the above-named incorporated Association.
I / We agree to be bound by the rules of the incorporated Association for the time
being in force.

Email

..... Date
(Signature of applicant 1)

..... Date
(Signature of applicant 2)

Note:

Information provided by the applicant is used to confirm Watson residency and to enable the Watson Community Association (WCA) to communicate with members regarding upcoming meetings and matters of interest. Information provided is not shared beyond the purpose of WCA information distribution.

Please return completed form to:



watsoncommunityassociation666@gmail.com

