



# THE WATSON

Newsletter of the Watson Community Association Inc.

Issue 120 – Winter 2024



The Watson Community Association Inc. acknowledges the traditional Aboriginal custodians of Canberra and pays our respect to their Elders past, present and emerging. We also acknowledge that many other Aboriginal and Torres Strait Islander peoples from across Australia have now made Canberra their home. We also acknowledge and celebrate their cultures, diversity, and contribution to the ACT and region.



Andrew Barr (Chief Minister of the ACT), Geoff Murray-Prior (Chair, Watson Community Association) and Gillian Murray-Prior (Vice President, Living Streets Association)

Watson Day- 7<sup>th</sup> April 2024

## IN THIS EDITION...

- The Future of the Watson
- Shout out
- Welcome to Watson
- Farewell to the Watson Post Office
- *Welcome to Watson* Event
- Watson Day
- Update- Watson Oak Tree Project
- Watson Buzz
- Majura Café Poets
- Save the date  
Canberra Potters Winter Festival-  
*Fired Up 2024: What the Flux!*
- Ever thought about finding more of your family story?
- Upcoming Planting Days by Billabong Pond
- Watson Property Sales
- Support Our Local Businesses
- Watson's Community Hall
- Community notices

Please note that the views expressed in this Newsletter are those of the authors and do not necessarily reflect the views of the Watson Community Association.

This newsletter was printed by:



# The Future of the Watzon

By Geoff Murray-Prior

Chair of Watson Community Association

As most of you would be aware, the Australian Catholic University (ACU) has printed our newsletter for the past 30 years. However, due to changes in studying practices, they no longer need the printing capacity they once had, and no longer have a printer capable of printing the Watzon, so they are unable to continue to print the Watzon for us. We sincerely thank the ACU, especially Mary and Alex, for their support over the past 30 years and we are sure of their continued support of the Watzon community.

We have been able to print this edition thanks to a one-off grant from the ACT Government. This not only allows printing but gives us time to plan the structure, frequency, and other matters, including funding, relating to continuing the production of this newsletter. Your committee will examine all avenues to enable the Watzon to continue, but it may be in a reduced form, or come less frequently. We want your suggestions so please email us on [watsoncommunityassociation666@gmail.com](mailto:watsoncommunityassociation666@gmail.com) so we can consider all options. \*

## The Autumn issue was brought to you by your neighbour volunteers

*Petra, Aileen, Fiona, Faseny, Peter & Anne, Chris & Helen, Simon, Matthew, Fiona & Bob, Ingram, Jenny, David & Vilaisan, Leonie & Ben @YWAM, Cub Scouts and Lisa the Group Leader of Majura Mountain Scouts Group, Janelee and Living Streets Associations, Helen, Leigh, Pete, Christine, Pamela, Maryam and her daughter.*

*Thank you Maggie and Petra for orchestrating the printing, paper drop off and delivery of the last Watzon newsletter \**



# Welcome to Watson!

*By Geoff Murray-Prior*

*Chair, Watson Community Association*

Our recent Annual General Meeting (AGM) added Benjamin Walters, Mary Sietsma and Merinda Nash to the WCA Committee. John Briggs stood aside but will continue his invaluable work heading the Woodlands Working Group. I welcome these new members to the committee and thank John for his continuing involvement. We now have a full complement of office-bearers and committee members.

Our AGM guest speaker was Dr Michael Mulvaney, co-founder of NatureMapr, who spoke on the subject: 'What can the Watson Community do to better understand and look after Watson's wildlife?' He gave numerous examples of how reporting by residents can expand the scientific knowledge of our flora and fauna.

**If you are a member of the WCA and have not been receiving emails from us, then we do not have your current contact details. Please email the WCA at [watsoncommunityassociation666@gmail.com](mailto:watsoncommunityassociation666@gmail.com) and provide your correct email details. Email is the only method of contact we use. Welcome to Watson \***

## Farewell to the Watson Post Office

Watson is lucky to have a vibrant shopping centre, with the Supermarket, the Pharmacy, a Hairdresser, a Beautician, a Filipino restaurant, the Knox Cafe and the Takeaway.

However, it is with sadness that we learn of the closure of the Watson Post Office.

The Post Office has been a vital part of the Watson shops since they were established in the 1960s. It was first located on the Knox Street side, next to where the doctor's surgery was, and where the Knox Cafe is today. In 1979 it moved into the News Agency (next to the Takeaway) where it stayed until it moved to the Pharmacy in 1999.

It was handy to pop in and grab the odd stamp, post pack, padded envelope, etc. and many people paid bills there. We thank all former, and the current employees Narelle and Ying for their wonderful service, which will be sorely missed.

The Post Office will close on Tuesday 25 June 2024. While the Red Street Posting Box in front of the pharmacy will remain, the individual post boxes on the wall will be removed \*



**WELCOME TO WATSON**

**Please  
join us**

The Watson Community Association Inc. invites newcomers to Watson to a casual, free event!

Friendly locals are also invited to welcome our new neighbours

**Sun 30 June at 1.30 to 3:00 pm**  
**The Knox Cafe, Watson Village  
Shops**

Local groups, organisations, businesses,  
sporting & hobby clubs have been  
invited

**More information:**

**[watsoncommunityassociation666@gmail.com](mailto:watsoncommunityassociation666@gmail.com)**

# Watson Day

By Geoff Murray-Prior

Chair, Watson Community Association

The weather leading up to Sunday 7<sup>th</sup> April was foreboding, but fortunately the rain held off on the day. Some 200 people turned up for our celebrations in the open space adjacent to the shopping centre.

Majura Mountain Scouts Group ran the barbeque and expertly handled the food and drink requirements of those present. We thank them for their contribution and look forward to seeing them again next year.



We were honoured to have all five of our Assembly representatives attending, and they all showed great interest and spent quite some time with us. All were very interested in the Living Streets Association and some have asked for more information about their activities.



We could not have been as successful without the support and generosity of Andy and the local Watson SupaBarn Express. Our sincere thanks to them.

The WCA Committee has agreed to run the event next year, but

in coordination with Neighbour Day so it will be on the last Sunday in March. Already Northside Community Service and the scouts have indicated their support



# Update- Watson Oak Tree Project

By Melissa Hammond



Some wonderful news and progress to share with you all about this project. A big thank you to the local community for getting involved and to our local government for supporting us.

Firstly, the salvaged wood from the oak trees that were removed on Irvine Street will be repurposed by Majura Primary School. Some exciting news to come but I will be able

to share more details as that project progresses. It warms my heart to know not all was lost and that history and precious resource will have another life in our community.

In relation to the replanting choices to replace the removed oak trees, we are fast approaching an outcome. Consultation has been undertaken with the wider community of Watson, key WCA members and the ACT Government. A big thank you to those who have participated in that process and I hope to reveal the species in the next edition of Watson.

And finally, a positive and unexpected outcome to share from this project. 7 mature oak trees on the corner of Knox and Irvine Street have now been saved after being identified as looking unhealthy and at risk of dying. Extensive works took place in May which involved: a tree assessment; a detailed soil study; service identification of electricity and telecommunication cables; aeration and activation of soil in root zones of up to 600mm deep using a VOGT geo-injector; deep soil hydration using a delicious tree cocktail of water, seaweed, fish emulsion and trace elements, and finally, mulching around the trees to retain the moisture and to protect the tree roots. To ensure these precious trees will remain alive and well in our community for years to come, another tree assessment and soil study will be conducted in 12 months. A big thank you to the team at ACT Urban Treescapes for their help and work on this to save the original oak trees of Watson.

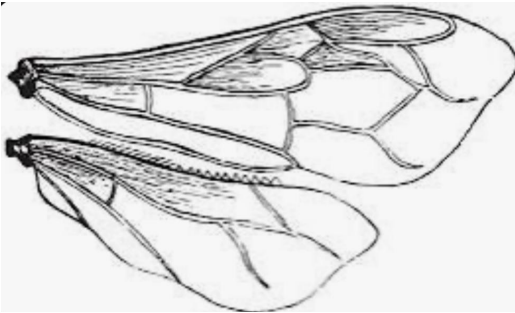
For further questions or comments, please email me at [treesofwatson@gmail.com](mailto:treesofwatson@gmail.com).

Thank you \*

# Watson Buzz

By Aileen Conroy

The buzz of honeybees is created from rapid wing oscillations of 230 beats per SECOND!! Their top flying speed is 25 kilometres per hour.



A drawing of a bee wing

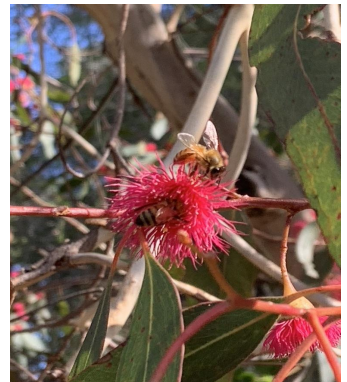
🐝 Bees have 2 sets of wings attached to their thorax (chest) and moved by muscles. They can carry almost their own body weight.

🐝 The wings are made from Chitin - a tissue similar to our fingernails - which

is strong and lightweight and veins filled with insect blood (called haemolymph) add rigidity. The distinctive pattern of veins is used to identify a bee's genus.

🐝 The four wings are clipped together during flight; folded in the hive; used like a helicopter to manoeuvre sideways through narrow spaces; fanned to cool the hive and distribute pheromones and the wing muscles are detached to shiver for temperature regulation.

🐝 In Challenger spacecraft, bees demonstrated that by day 7 they learned to fly in zero gravity!



A bee on a flower

🐝 The main risk from varroa destructor mites which are now spreading through Australia, is that they can carry deformed wing virus, which makes bees unable to fly.

🐝 During their two to three weeks as foragers bees fly up to 800 kilometres until sadly their wings literally wear out and they die \*

## Majura Café Poets

### WONDERS

*Marunta*

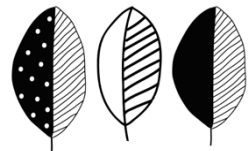
I was told the Fire would cease and  
it didn't  
-Climate Exchange similar to the  
Stock Exchange, both monetised, homes  
down, insurance premiums up, lives lost.  
How much is a life worth? Incalculable, in  
this annual Australian cycle Nature  
continues to pedal.  
Then I bumped into a contradiction,  
Cease and Fire. How can I Cease and Fire  
at the same time? Perhaps punctuation  
will help. Cease-Fire Cease, Fire Cease!  
Fire!  
Cease? Fire? Who's asking the question?  
Who has the answer? Lives that are  
punctuated  
by the separation of Cease and Fire now  
want  
to find a Cease and Fire connection. I  
want to  
Cease the moment, in the next breath  
Fire  
the moment. I want all the fiery stuff to  
Cease. If both created a ring of Fire in the  
pit of the humane belly wonders will  
never  
Cease \*

### Other People's Pegs. . .and Mine

*Judy Smith*

1

Wooden pegs my mother had  
Little dolls lined up  
Like obedient children  
Capturing billowing bloomers  
Rigid corsets  
Threadbare work shirts  
Sox with fresh-washed prickles.  
The Hills Hoist a masterclass  
Of regimentation and order  
All of which she could control  
Unlike other things in her life \*





## Majura Café Poets (cont.)

### Mindscape.

*Nicole Kulesza*

The steep cliff edges, patches of  
green,  
platters of colors- rustic orange and  
reds,  
sandstone, petals ingrained  
in ancient  
rocks, hollow caves.

By a beaten track, a faded pattern,  
coastal niche, a gritty windy path,  
footprints that left a mark,..  
strolling on a metropolitan strip ,  
the varied orientations,  
lead to a wavering blue haven.

A body shape, sinking and seeping,  
in sands between toes and feet  
splashes on legs, thigh height,  
a slight bend, a fumble, the taste of  
salty sea...

As tangles of sea weeds, deformed  
shells  
some that gleam, unfold on the  
shore,  
to dispel clots of thoughts,  
to be perfectly still,  
a mindscape sculpts the sea \*

### Plea (post-stroke)

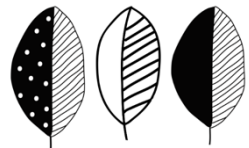
*Jenny Burgess*

Open the doors of my mind,  
let the words flow free,  
unblock the vessels of my brain,  
so streams of speech can flow again  
when you find the key -  
cascade

Open the doors of my mind  
to cease this jumble of jabber and  
junk,  
untangle the nerves to my tongue,  
so words will emerge  
to converse with you -  
connect

Open the doors of my mind  
so you can see beyond this fool  
to a knife-mind, a wit-mind,  
a book-mind, an art-mind,  
not this turbid pool -  
distil

Open the doors,  
open the doors  
of my cage \*



# Save the Date! Canberra Potters Winter Festival-Fired Up 2024:

## What the Flux!

By Katrina Leske

Gallery and Events Manager, Canberra Potters

*Fired Up* is Canberra Potters' annual winter festival celebrating Canberra's ceramics community.

**3 to 8pm | 10 August 2024 | Canberra Potters, Watson Arts Centre. 1 Aspinall St, Watson**

The celebration promises an enchanting evening under the winter night sky, where visitors can immerse themselves in the vibrant world of ceramics and connect through clay in the heart of Canberra.

Start the afternoon by discovering your creativity through a variety of pre-booked clay experiences. With the guidance of experienced potters, delve into the hands-on "Have a Go, Have a Throw" wheel-throwing sessions or explore hand-building at designated stations. You can also witness the magical alchemy of raku firing, where you can glaze pre-made ceramic sculptures and watch them get fired right in front of you! (Please note these experiences require pre-bookings, coming soon).

For those who prefer to observe, resident artists will open their studios doors, and professional potters will give demonstrations throughout the afternoon, offering a behind-the-scenes glimpse into the maker's world. Browse the Ceramics Market and Shop, where local artists will offer a broad range of wares for sale.

Food and drinks will be available to purchase from selected vendors, and visitors are invited to buy handmade bowls and have them filled with delicious homemade soup for free. As the evening unfolds, be enchanted by live music,



**Image Caption:** Catherine Scott, Fired Up 2023 Petal Kiln

captivating performances, and mesmerising fire twirlers. Cap off the night with the grand unveiling of the custom-built petal kiln, a breathtaking spectacle not to be missed.

Come and get fired up about clay at Canberra Potters! For more information head to [canberrapotters.com.au](http://canberrapotters.com.au) or scan the QR code.

Supported by the ACT Government \*

# Upcoming Events

## @ Canberra Potters



<b>JUNE 6 &amp; 7</b>	<b>Term 3 Class Bookings open 8am</b>
<b>JUNE JULY 6 - 7</b>	<b>2024 Student   Teacher Exhibition</b>
<b>UNTIL JUNE 30</b>	<b>Term 2 runs</b>
<b>JULY AUG 11 - 4</b>	<b>Collections Exhibition</b>
<b>JULY SEPT 22 - 22</b>	<b>Term 3 runs</b>
<b>AUG 10 3-8PM</b>	<b>FIRED UP 2024 WINTER FESTIVAL</b>
<b>AUG SEPT 22 - 22</b>	<b>55: Exhibition by Malcolm Cooke</b>



**CanberraPotters**  
**WatsonArtsCentre**  
1 Aspinall St Watson, ACT 2602  
Enquiries 02 6241 1670 [canberrapotters.com.au](http://canberrapotters.com.au)

# Ever thought about finding more of your family story?

By Andra Putnis

Hi there, I am a local Watson resident about to publish a book about the white-knuckle journey I've been on for many years to discover the lives of my Latvian grandmothers. If you've ever thought about delving into your family history, then this book might inspire you!

I grew up close to my grandmothers but never really understood all they went through to survive the Soviet and Nazi occupations of Latvia during the Second World War. In my twenties, I broke an unspoken family code not to dig too deep into the past and set out to discover their life stories. I found when I plucked up the courage to ask, the most remarkable tales were shared about their lives during the war and then journey to Australia.

It feels like life is always hurtling forwards and it can be hard to keep our footing on this Earth. I have loved looking out over my Watson garden and stopping to take the time to learn about what came before me. The long walks around our beautiful neighbourhood certainly helped the writing process!

Our grandparents and parents have seen a lot of life. Even better, they are often able to tell their stories in a way that will have you hanging off the edge your seat. Or perhaps you are the one that now wants to speak? To those of you who might want to tell their life stories and have the chance to reflect – this book provides an example of the rich journey it can entail...

To learn more about my book *Stories My Grandmothers Didn't Tell Me* (Allen & Unwin), please visit my webpage [andraputnis.com.au](http://andraputnis.com.au) or scan the QR code below ✨



# Upcoming Planting Days by Billabong Pond

By Veronica Walker

Friends of Watson Green Space

Join Friends of Watson Green Space for upcoming planting days at Billabong Pond:

- 2 to 4 pm, Sunday 16 June
- 2 to 4pm, Sunday 23 June

Plantings by Billabong Pond will help provide safer passage for frogs, lizards and small mammals travelling between Billabong Pond and the unnamed marsh pond. This will include removing weeds and planting local native and threatened groundcover species and adding habitat logs and rocks between the two sites. Connecting Nature, Connecting People is an ACT Government initiative aimed at supporting the movement of species across the landscape, enriching and building the resilience of urban biodiversity, enhancing our community's connection to nature and helping cool the city.

To find out more, join the 'Friends of Watson Green Space' Facebook Group, email your interest to [friendsofwatsongreenspace@outlook.com](mailto:friendsofwatsongreenspace@outlook.com), or join our WhatsApp Community Group using the QR code below:



Image credit: Meredith Lekhac\*

# Planning Group Updates

By Simon Clarke- WCA Committee and Planning Group Convenor

[planning2602@gmail.com](mailto:planning2602@gmail.com)

## Change!

It's been said that change is the only constant in life! Why should planning be different? The AIE has announced that it plans to commence the redevelopment of the old Watson High School site. However the new Stage One is different to their original proposal.

Stage One is about  $\frac{1}{3}$  of the site and is on the Phillip Ave/ Windeyer St corner.

The main changes which will impact our community are -

- no student housing on that SE corner. The whole proposal seems to have scaled back the student accommodation by about  $\frac{1}{3}$ . It seems to be all on the western side of the campus.
- an L shaped building on that corner which will be 2 storeys (about 10m) high and about 3000sq m footprint. Previous proposal was 4 storey (15m) and about 1700sq m footprint. This is a significant change.
- Stage One now includes the large production hall which will be placed on the eastern side of the main driveway.

Our concerns are – What is the impact on trees on that corner, especially when you factor in the impact of the proposed Garden City bike path (3m wide) on Windeyer St?

- How will parking be managed during construction and when the facility is up and running?
- What set-backs are planned to reduce visual impact and improve amenity?

At the time of writing they were unable to comprehensively answer any of these questions. My sense is that things are a bit rushed ( eg - the tree study is “still coming”) or they are taking advantage of the new structure to push things through. They hope to have it to ACT Gov by end July then planning approval by end August. (ACT Election caretaker provisions are in force from 13<sup>th</sup> September.)

You may have received their glossy postcard in your letterbox. We were further concerned that the consultation process appeared to be flimsy and mainly online. In my opinion on line consults are far inferior to face to face ones.

They did agree, after a bit of push and shove, to hold an open residents meeting at 6.30 PM on Wednesday 12th June at the AIE. This was jointly sponsored by the Watson,

Hackett and Downer Community Associations. Timing hasn't been friendly to Watzon readers but I'll report back in the next issue \*

## Watson Property Sales

*Brought to you by home. byholly*

27 Shewcroft Street	\$1,530,000	26/215 Aspinall Street	\$950,000
25 Ada Evans Street	\$1,460,000	7/1 Mcclemans Street	\$940,000
9 Flos Greig Street	\$1,276,000	7/98 Aspinall Street	\$940,000
66 Higinbotham Street	\$1,270,000	52/67 Negus Crescent	\$880,000
67 A'beckett Street	\$1,265,000	52/45 Negus Crescent	\$880,000
8 Burnside Street	\$1,260,000	106/215 Aspinall Street	\$875,000
62 A'Beckett Street	\$1,230,000	76/395 Antill Street	\$852,500
1 Holroyd Street	\$1,210,000	5 Phillipa Weeks Street	\$720,000
4 Hearn Street	\$1,150,000	16/10 Federal Highway	\$695,000
11 Kerferd Street	\$1,140,000	45/45 Negus Crescent	\$565,000
26 Wade Street	\$1,100,000	34/23 Aspinall Street	\$560,000
8 Hood Place	\$1,090,000	5/18 Whitmore Crescent	\$505,000
20 Dowling Street	\$1,050,000	19/35 Tay Street	\$467,000
233 Antill Street	\$1,050,000	27/35 Tay Street	\$462,000
42 Knox Street	\$1,012,000	98/20 Federal Highway	\$460,000
58/215 Aspinall Street	\$1,000,000	7/62 Knox Street	\$410,000
26 A'Beckett Street	\$980,000	7/8 Irvine Street	\$330,000
6 Harding Street	\$980,000	1/6 Irvine Street	\$295,000
14 Street Place	\$970,000	31/109 Knox Street	\$295,000
61/215 Aspinall Street	\$970,000	8/157 Knox Street	\$290,000
46 Cullen Street	\$960,000		

## Support Our Local Businesses



**EXPRESS  
WATSON**

**Phone: 02 6255 6800**

Come in and experience  
the service for yourself!

*EFTPOS available – no minimum  
FREE local home delivery services*



We are a local hub for families and friends to relax and enjoy excellent local & seasonal food and beverage.

We care about the earth and environment, and we do everything in our power to be sustainable and environmentally friendly in all our business practices.

**Brekky and lunch - 7 days a week**

Monday-Friday 7:00 am to 4:00 pm

Saturday-Sunday 7:30 am to 4:00 pm

**At the Knox we are for  
the locals, by the locals.**

**Dinner**

Tuesday-Saturday from 4:00 pm

## home by holly

**Team McReynolds**

**Michael, Jenny and Mark**

For all your real estate needs,  
call us today!

Jenny 0409 300 065 | Michael 0419 688 034

Mark 0401 829 087 | [jenny@homebyholly.com.au](mailto:jenny@homebyholly.com.au)





Convenient one stop shopping in Watson for all your pharmacy needs

## Watson Pharmacy

For friendly and efficient Customer Service

### Flu and Covid vaccines

- ❖ Covid-19 vaccines- Pfizer, Moderna and AstraZeneca  
For adults and children over 12 years old
- ❖ Flu vaccines  
For adults and children over 5 years old

Hard to park? You can hand in your scripts by ringing us on [\(02\) 6241 1506](tel:0262411506)

Mon to Fri 9:00am–6:00pm  
Sat: 9:00am–01:00pm

- ❖ QCPP accredited
- ❖ Leave/medical certificates
- ❖ Seniors' discounts
- ❖ We can price match
- ❖ Free script pick-up and delivery
- ❖ Stop smoking classes
- ❖ Blood pressure checks

### Licensed Post Office

- ❖ Postal Services
- ❖ Gifts
- ❖ Cards for all occasions
- ❖ Passport photos

Mon to Fri 9:00am–5:30pm

**Blocked drains. Hot water. Leaking taps.**



**Chris Williams**

M | 0420 607 765

E | [chrisjw100@gmail.com](mailto:chrisjw100@gmail.com)

PO Box 7179 Watson ACT 2602

ABN 27 638 504 284

NSW Licence 282355c ACT Licence 2019222

## DIRECT GARDENING SERVICES WATSON



Gardeners straight to you = no more middle-people

Watson local gardeners have teamed up to change the way we do gardening in our suburb.

Whether you need a small backyard job, or wanting to save some money on your apartment complex body corporate gardening fees, we think that

local residents paying corporate fees can be a thing of the past!

Hire local, pay for grass-clippers - not ticket clippers.

Call Oscar at 0411 513 150 any time and we'll go from there.

FREE LOCAL QUOTE

## ANDREW MCREYNOLDS PLUMBING

FOR ALL YOUR PLUMBING SOLUTIONS

MOB: 0402 921 111

E: [andrew.mcreynolds1@gmail.com](mailto:andrew.mcreynolds1@gmail.com)

LICENSE NO. 20121001

ABN: 95548301062





Disorganisation, overwhelm and clutter in your home, mind & life? Let me help you bring calm, order & space into your day with hands-on or virtual assistance.



Alicia Gilchrist is a local Watson artist whose paintings have been featured in solo and group exhibitions. Her abstractions are designed to evoke emotion and capture attention through the use of bright, vibrant colours, and an energetic style of painting.

Alicia's paintings are available on <https://bluethumb.com.au/alicia-gilchrist> (see QR code), or by contacting Alicia directly by email [aliciakgilchrist@gmail.com](mailto:aliciakgilchrist@gmail.com)



## Watson's Community Hall

By Leonie Watts

Watson has a hall! It's at 30 Tay St which is in The Fair (the most northern estate in our suburb). It sounds logical that the Watson Community Association would manage bookings for the Watson community hall but we don't! The hall has reverse cycle aircon, trestle tables, chairs, a kitchen with basic supplies, toilets, and an outdoor area. We receive many enquiries about booking the hall, so please store this info somewhere for future reference.



To book the hall contact [infoact@ljhookerstrata.com.au](mailto:infoact@ljhookerstrata.com.au) or [monique@ljhookerstrata.com.au](mailto:monique@ljhookerstrata.com.au) or phone LJ Hooker Strata on 62497700. It's helpful when doing so to also quote the Unit Plan number which is CT 10 ❁

# Community Notices



## INNER NORTH COMMUNITY PANTRIES NETWORK

### TURNING THIS:



Neighbours, schools, community groups, workplaces, collect your cans, bottles and donate your 10c redeemables to the Inner North Pantries Network



### INTO THIS:

Funds are used for \$50 weekly Box Divvy fruit & veg and help fund supplies for Ainslie & Braddon  
Account number: 0432 947 136

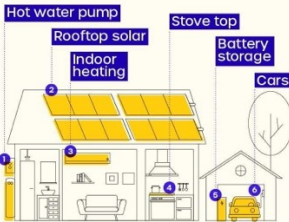
Help with O'Connor supplies  
Account number: 0458 793 285

Drop to our collection points:  
O'Connell or Stephen Street, or drop to an Express or ReturnIT point



## SUBURB ZERO

We're looking for 500-1,000 Canberra homes to be a part of a world-first program to electrify their suburb



**Do you want to reduce your cost of living while safeguarding our environmental future?**

**Take our survey!**

[surveymonkey.com/r/electrifyACT](https://surveymonkey.com/r/electrifyACT)



Meg's Toy Box is a community organisation which hires toys, puzzles and games for children aged from three months to eight years.

Email [megstoybox@gmail.com](mailto:megstoybox@gmail.com)

Address St Margaret's Uniting Church- Cnr Antill St and Phillip Ave, Hackett ACT 2602

Opening Hours (February to November)  
Wednesday 10am - 12pm | Saturday 2pm - 4pm



**WATSON**  
COMMUNITY ASSOCIATION INC.

**APPLICATION FOR MEMBERSHIP**

*Incorporated under the Associations Incorporation Act 1991*

I / We, .....  
(full name of applicant/s)

of (address)  
.....

hereby apply to become a member/s of the above-named incorporated Association.  
I / We agree to be bound by the rules of the incorporated Association for the time being in force.

Email .....

..... Date .....  
(Signature of applicant 1)

..... Date .....  
(Signature of applicant 2)

**Note:**

*Information provided by the applicant is used to confirm Watson residency and to enable the Watson Community Association (WCA) to communicate with members regarding upcoming meetings and matters of interest. Information provided is not shared beyond the purpose of WCA information distribution.*

Please return completed form to:



[watsoncommunityassociation666@gmail.com](mailto:watsoncommunityassociation666@gmail.com)